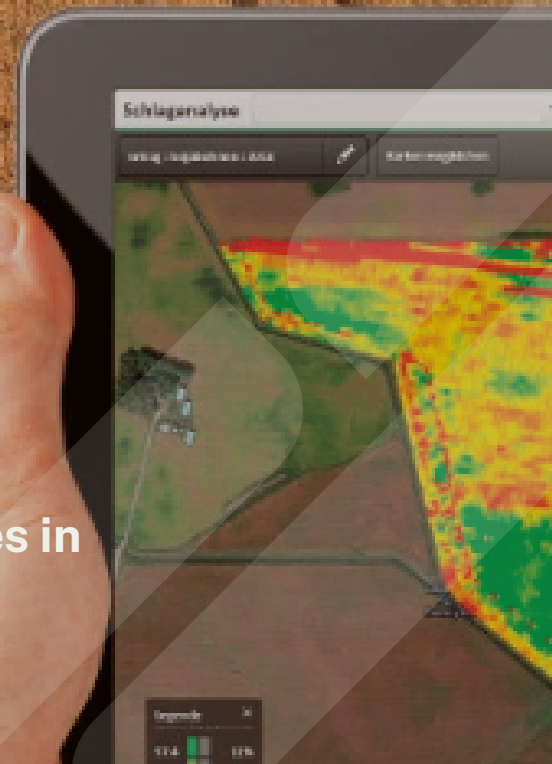


OPERATIONS CENTER



GUIDANCE LINES

Editing old and creating new guidance lines in Operations Center.

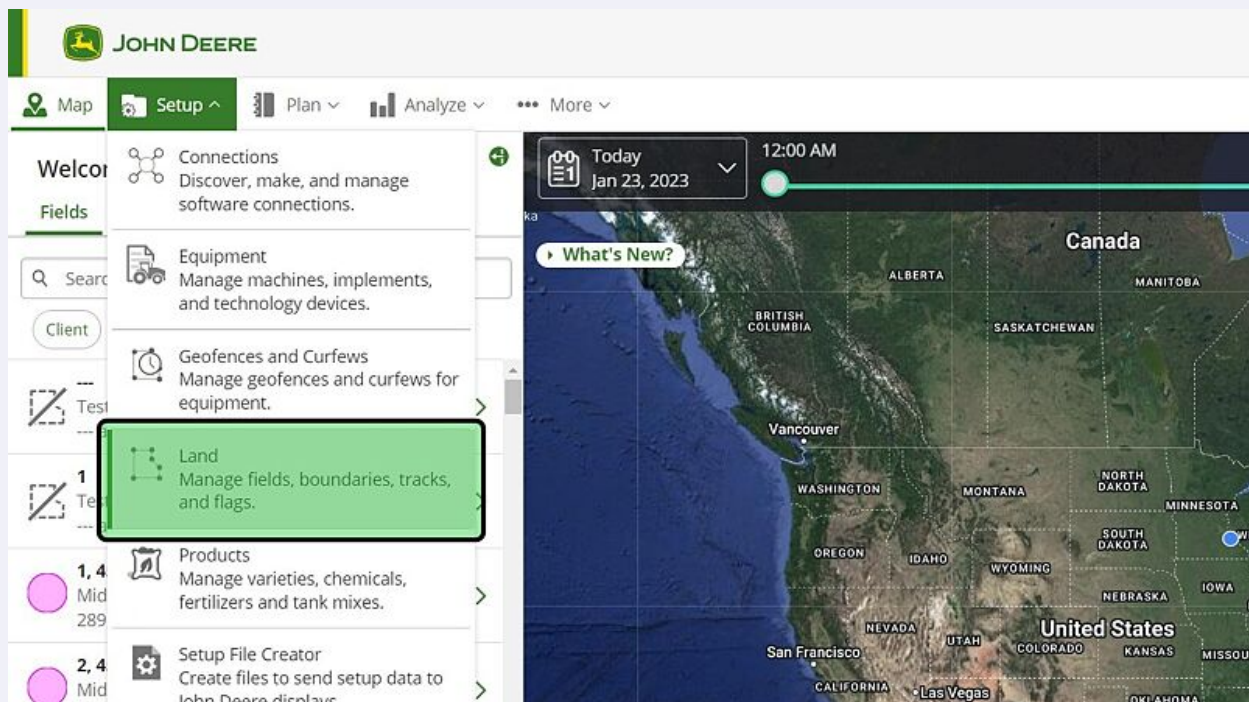


Operations Center - Guidance Lines

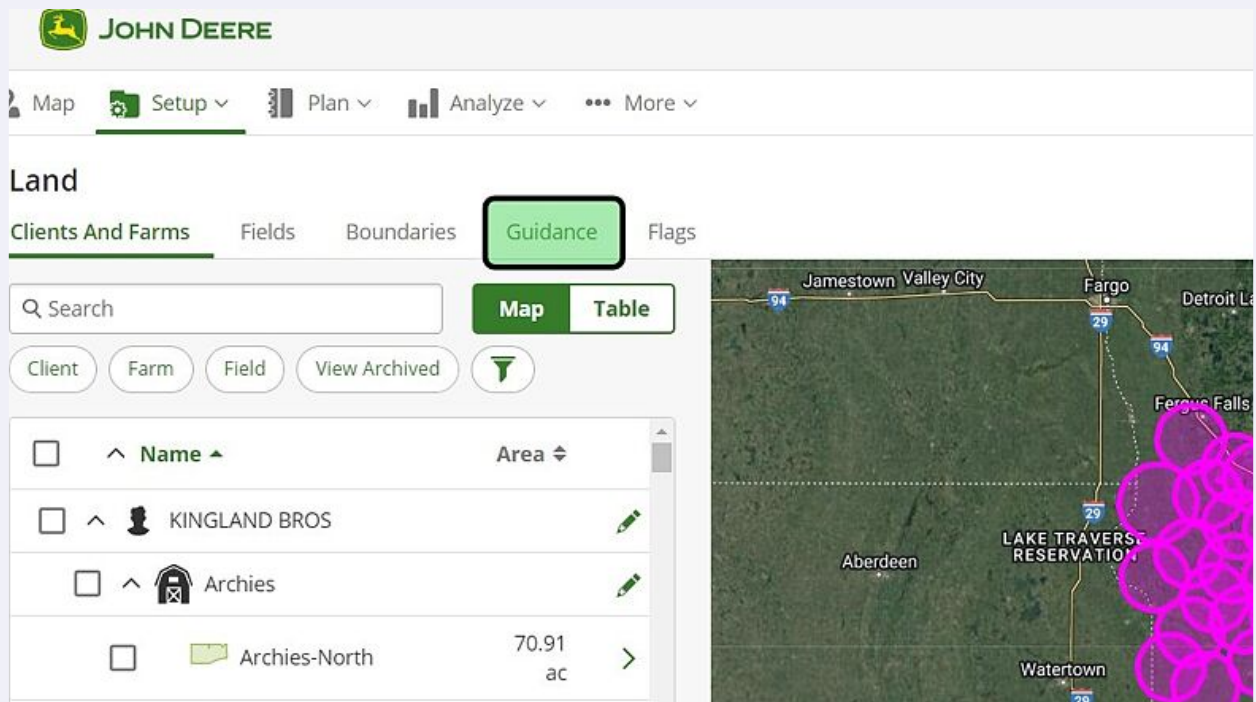
Editing old and creating new guidance lines in Operations Center

1 Navigate to Operations Center

2 Select "Land: Manage fields, boundaries, tracks, and flags." under the "Setup" menu



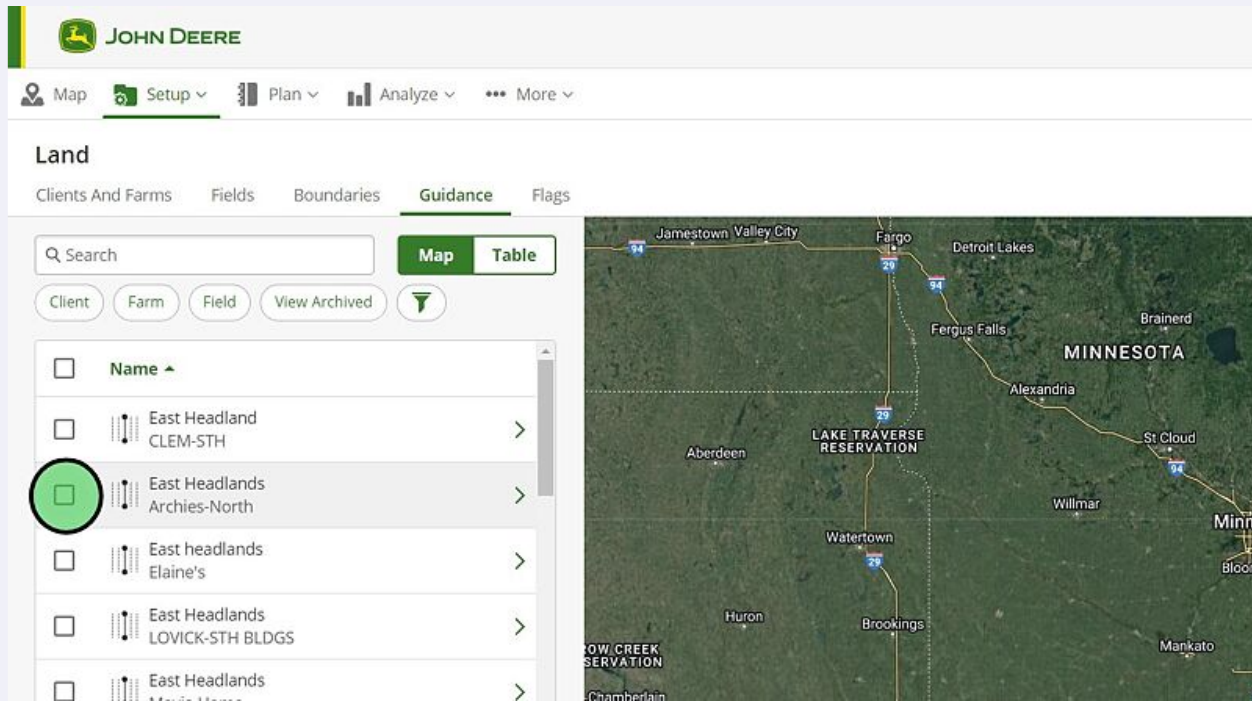
3 Select the "Guidance" section



Editing a Current Guidance Line

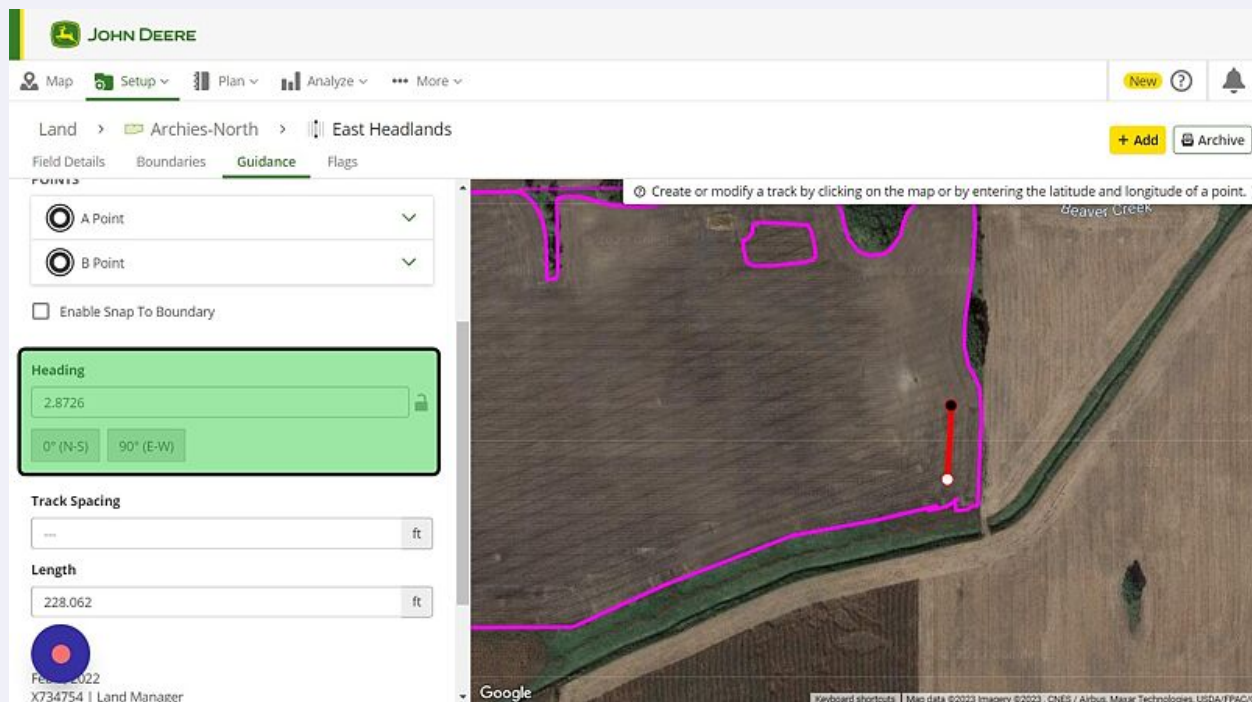
4

Select the guidance line the user wishes to edit. The subtitle is the field the guidance line is located in.



5

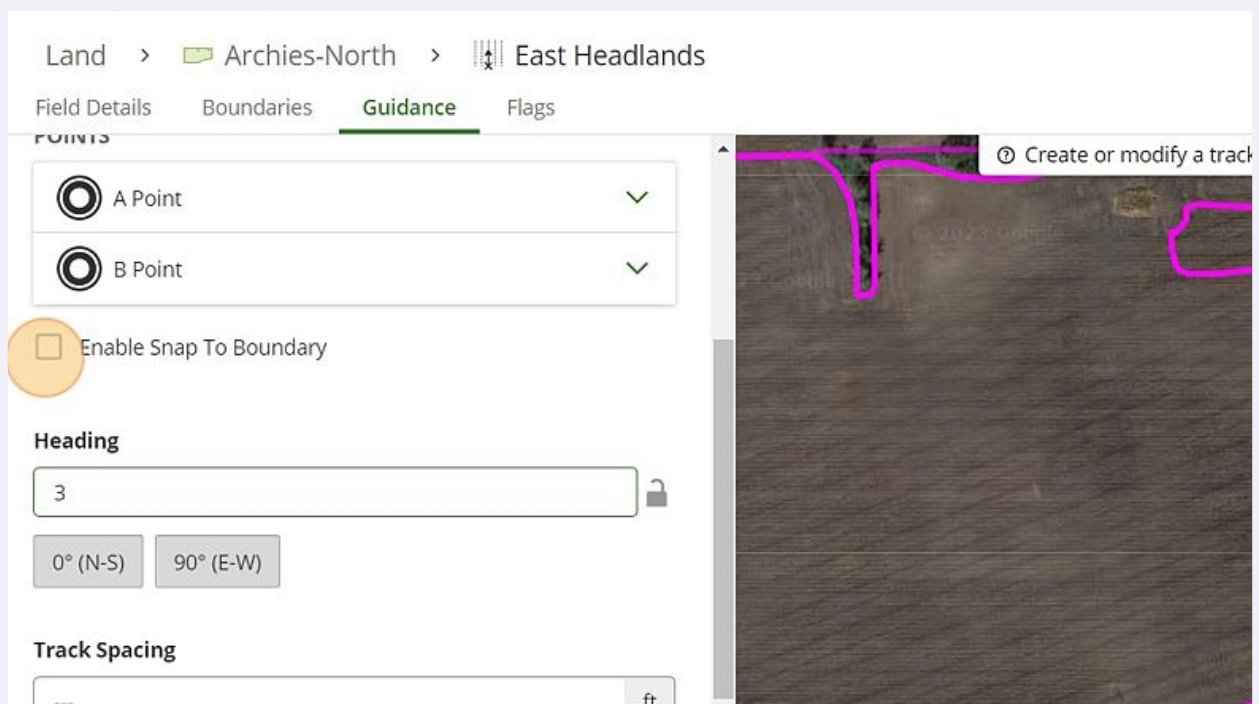
User can change the degree angle of the guidance line



6 User can click and drag each point of a guidance line to edit it

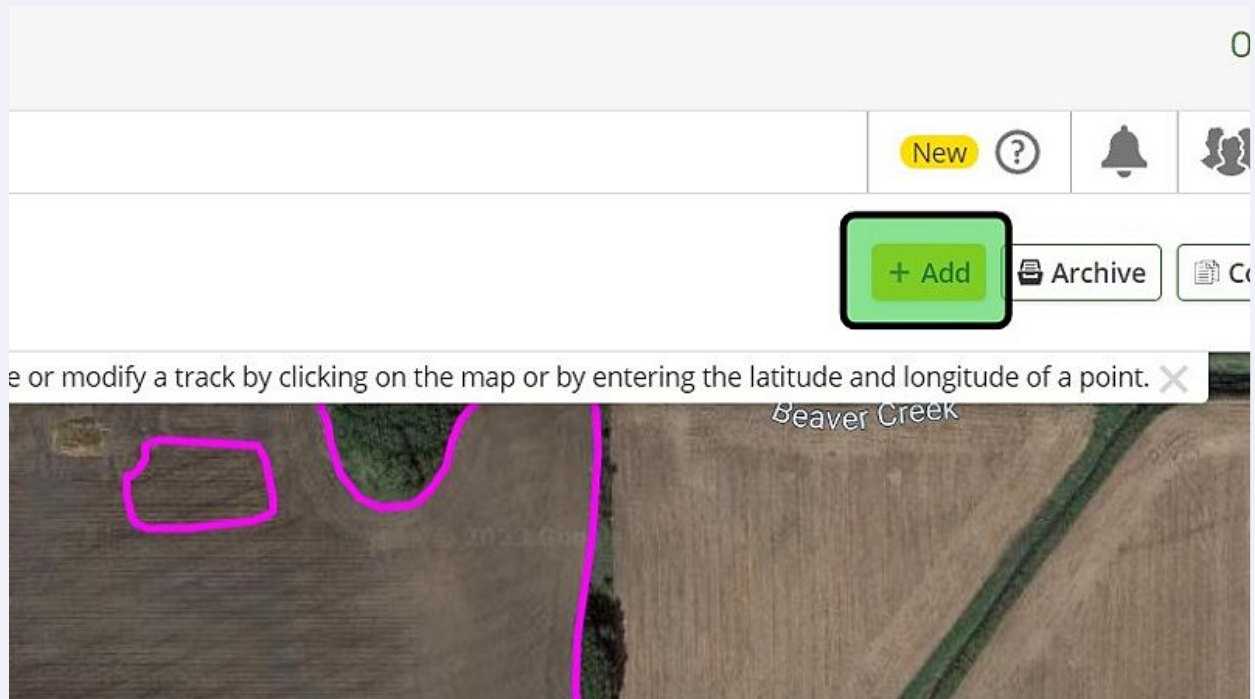


7 User can snap the guidance line to the current boundary. If selecting this, verify that the boundary is STRAIGHT. If boundary moves inward, machine or implement could move outside of the boundary.

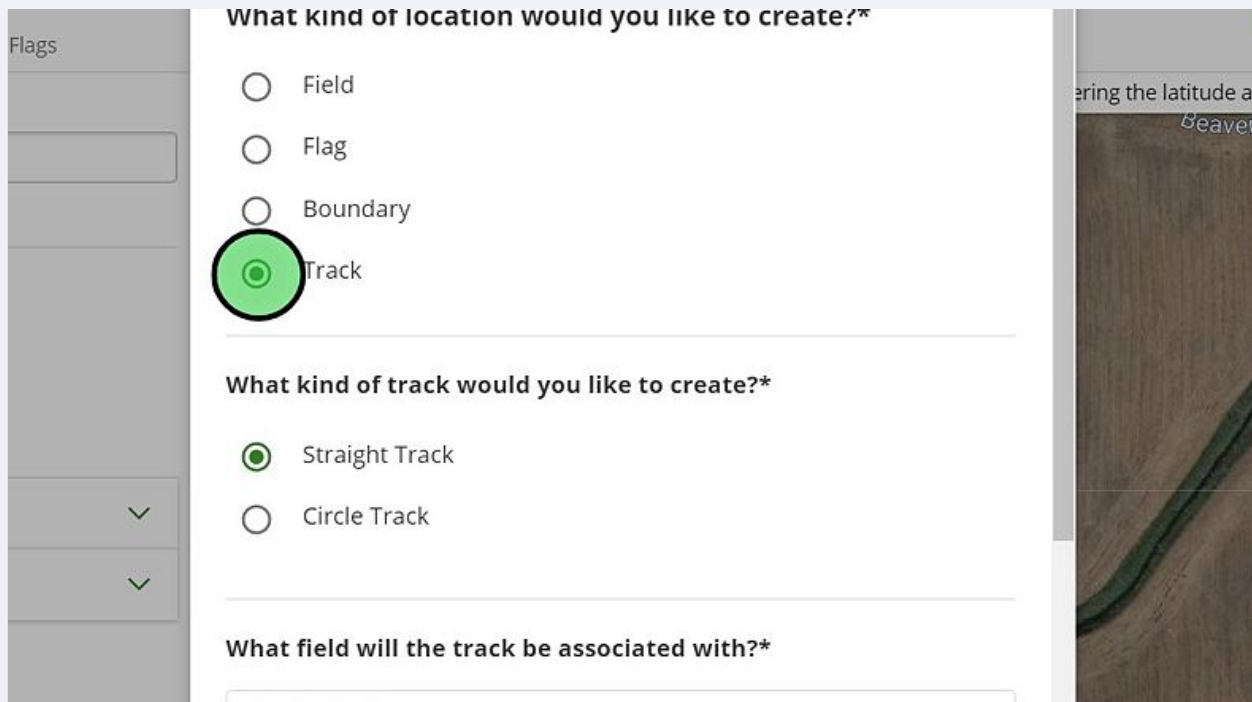


Creating a New Guidance Line

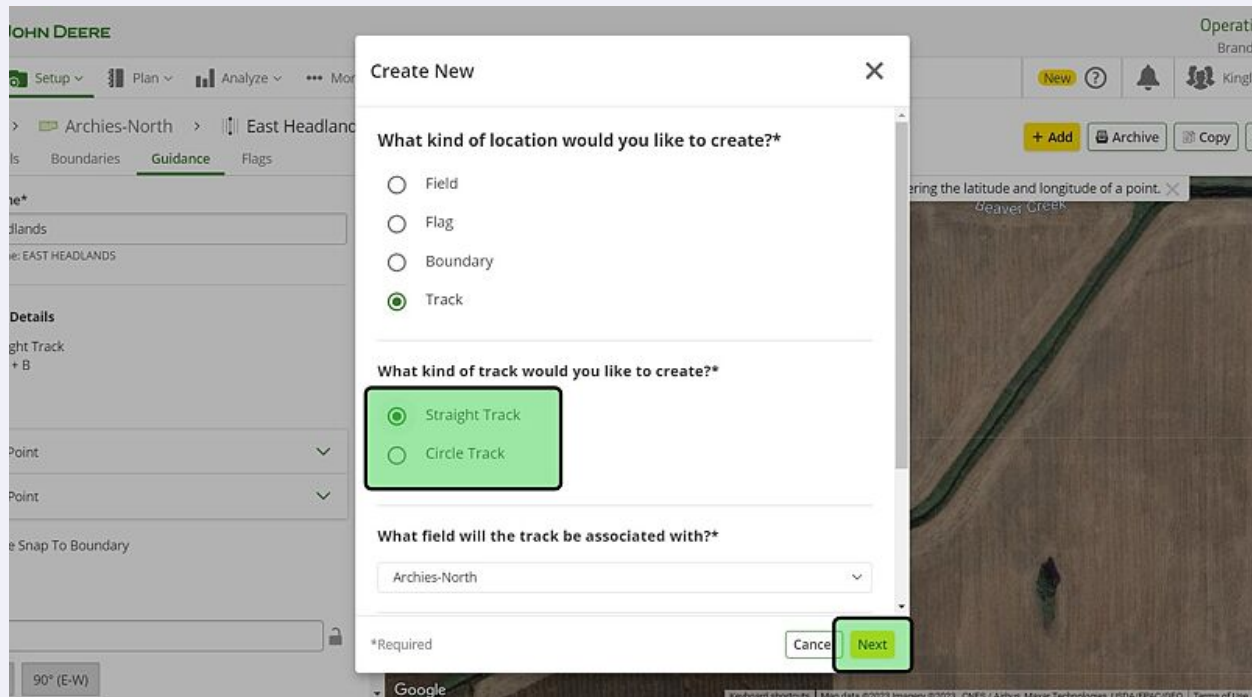
8 User can create a new guidance line



9 Select the "Track" field.



10 Select the type of track the user wishes to create.



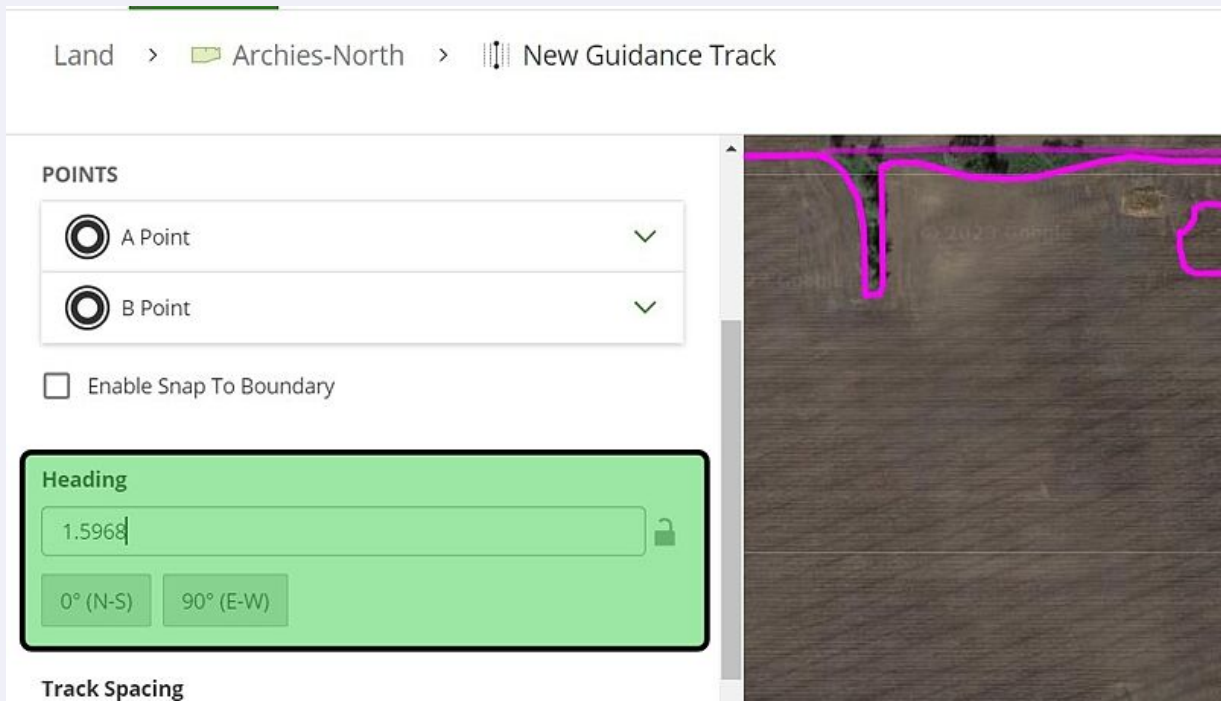
11 Left click where the user wants one point of the line to be



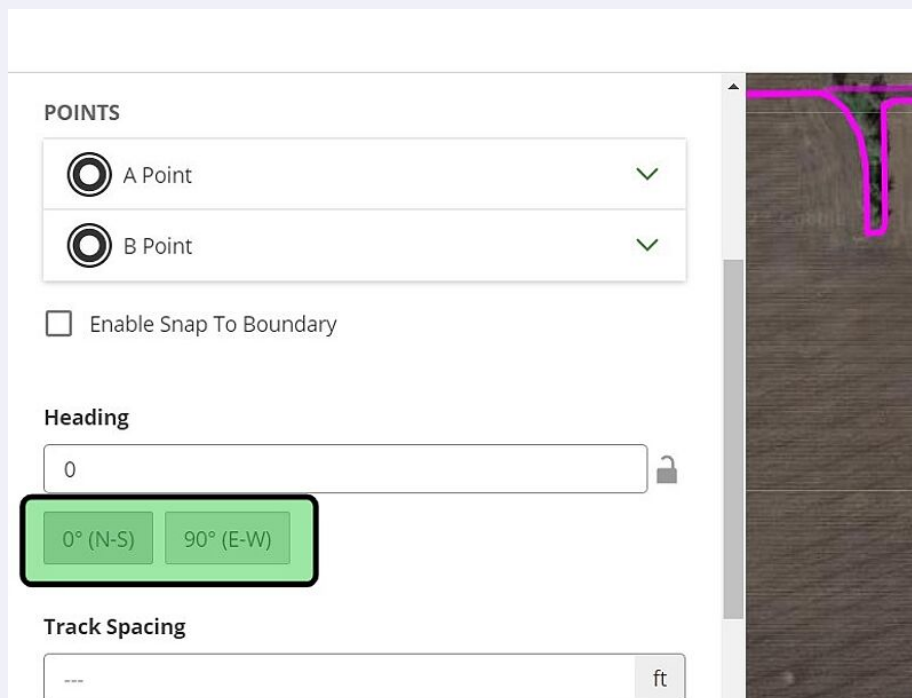
12 Left click again where the user wants the second point of the line to be



13 User can manually adjust heading after creating new guidance line.



14 User can also select true N-S or E-W



15

Select "Save." Once saved, guidance line will be available under the field it was created in.

